

January 22, 2021
Marubeni Corporation
Marubeni Pulp & Paper Co., Ltd
Marubeni Plax Corporation
AEON CO., LTD.
AEON TOPVALU CO., LTD.

AEON × Marubeni 「Bottle to Bottle Project」 Launched

—Toward halving disposable plastic use by 2030—

Aeon and Marubeni Group (Marubeni Pulp & Paper Co., Ltd. and Marubeni Plax Corporation, which are wholly owned subsidiaries of Marubeni Corporation) will start the “Bottle to Bottle Project,” which aims to establish a resource recycling system by producing recycled products through closed recycling^{*1} using plastic bottles collected at Aeon stores.

Aeon has set a goal to halve the use of disposable plastic by 2030 toward the realization of a decarbonized and resource recycling society. To this end, all TOPVALU products will be produced using materials that meet the requirements of the environment and society, while shifting to production of plastic bottles using 100% recyclable or plant-derived materials. This project is one of the pillars of the initiatives implemented to achieve the goal and aims to establish a stable and sustainable resource recycling system by leveraging a wide range of the Marubeni Group’s network that can manage the collection, transport and production of plastic bottles in an integrated fashion in addition to the stores, products and services of Aeon in order to ensure that plastic bottles, which used to be recovered and recycled differently according to each store, will be treated in a comprehensive manner.

This February, Aeon Retail Co., Ltd. The Maruetsu, Inc. Maxvalu Kanto Co., Ltd. Aeon Market Co., Ltd. will launch an experimental group-wide collection and transport scheme targeted for some stores in the Kanto area, and Aeon Topvalu Co., Ltd. will produce bottled beverages made of the recycled PET resin created from plastic bottles recovered in the endeavor and sell them at Aeon stores in June. Establishment of a mechanism to recycle the plastic bottles collected at stores in the Kanto area is scheduled for fiscal 2021, to be gradually disseminated throughout the country.

<Scheme of the “Bottle to Bottle Project”>

- ✓ Marubeni Pulp & Paper Co., Ltd. takes responsibility for the distribution system, including collection, transport and recycling of plastic bottles, and then Marubeni Plax Corporation establishes a system to manage the manufacturing and supply of preform^{*2}.
- ✓ Plastic bottles collected at Aeon stores are used to make recycled PET resin through closed recycling and are created as TOPVALU products.



*1 Closed recycling: Plastic bottles collected by Aeon stores are recycled as recycled resin and used for raw materials in Aeon’s products.

*2 Preform: An intermediate product that is subsequently blown into a PET bottle.

Reference

■ Aeon's efforts toward the realization of a recycling society

Aeon Plastic Usage Policy

Aeon is working toward the sustainable use of plastics in order to contribute to the creation of a decarbonized society. Through our stores, products, and services, we will work together with all stakeholders to establish a new way of life with zero net carbon emissions and thorough recycling/reuse of resources.

1. We will review the wasteful use of resources and the use of disposable products in our businesses and aim for zero disposable plastic use.
2. We will transition to using necessary plastics made from environment- and society-friendly materials instead of plastics made from fossil fuels.
* Appropriate selection of traceable paper, biomass plastic, recycled plastic, recyclable materials, etc., taking into account the environmental and social impact of the entire life cycle
3. We will establish a resource recycling model for the collection, reuse, and recycling of used plastics at our stores, and work together with customers on sustainable resource use.

Targets: Aim for sustainable plastic use with zero net CO2 emissions by 2050,

- ◆ By 2030, we will halve the volume of disposable plastic we use.
- ◆ By 2030, we will use environmentally and socially friendly materials in all private brand products.
- ◆ By 2030, we will convert 100% of private brand product PET plastic bottles to bottles made from recycled or plant based materials.

Formulated September 2020

■ Examples of “TOPVALU” eco-friendly products

Uses recycled plastic



Containers made of 100% mechanically recycled PET materials using recycled plastic beverage bottles

Shifted packaging material to paper



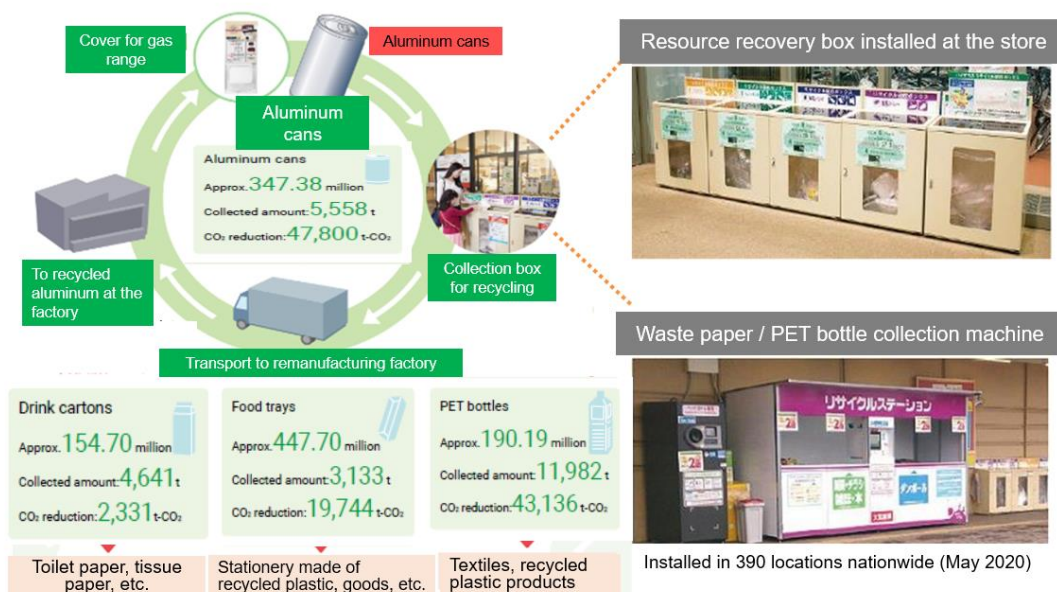
Plastic packaging reduction by using paper packaging in part and not including plastic measuring spoons

Resource saving and miniaturization



Plastic packaging reduction by decreasing the number of toilet rolls but increasing their length by 1.5 times

■ Resource collection at stores



Results for FY 2019 (Total for 25 consolidated subsidiaries)